

Advanced Web Reporting

Overview

The Advanced Web Reporting is a solution for creating web based reports and displays easily and effectively.

The Advanced Web Reporting is composed of two different elements: The Active Data Layer and Report Builder.

The Active Data Layer is a directory where all the needed data items are defined. A single data item consists of a data description, data unit and if necessary the data item can be renamed.

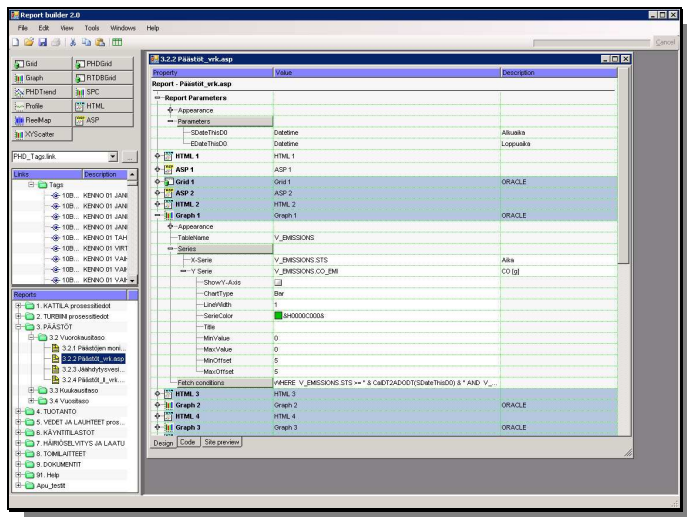
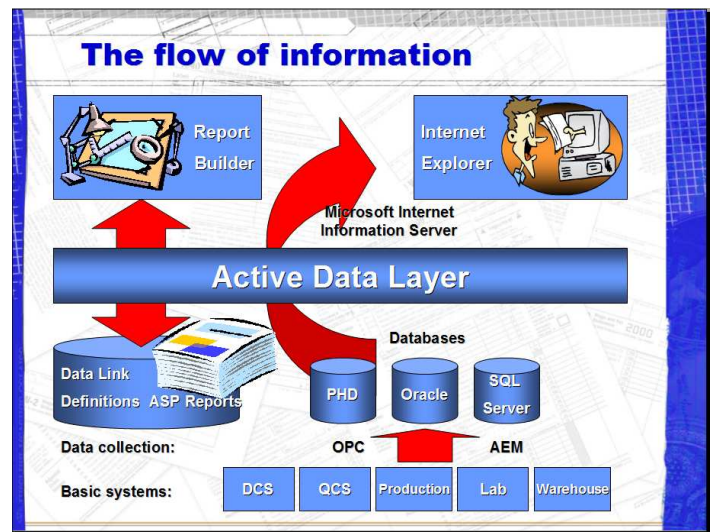
Data items can also include information about the origin of a specific data item and its search criteria.

The Report Builder is used to edit the layout of the reports and displays and to attach the necessary data elements such as headers, data cells, and arrays to the reports.

Further the Report Editor is used to link the data items defined in the data directory to the data elements on the report or display. This way the information to be presented can be attached to reports.

Advanced Web Reporting

The displays and reports created by the Advanced Web Reporting are based on ASP pages (Active Server Pages), which can be accessed by several users for simultaneous application execution at their workstations using Microsoft IE (Internet Explorer).



Report Builder display

The reports and displays are stored in the IIS server in their own report directory which is displayed every time when the reporting web page is opened.

The structure of the report directory is freely configurable and consequently for easy report retrieval.

Active Data Layer

The Active Data Layer is used to define all data items for reports and displays. The data items can be located in the Oracle, SQL Server, InSQL Server or MySQL database, Honeywell's PHD process history database and also in specific data sources if necessary. By means of the Active Data Layer the old existing data sources can be used which reduces the need for new data sources.

Data security

Access rights to the reports and displays can be defined according to the needs of that moment.

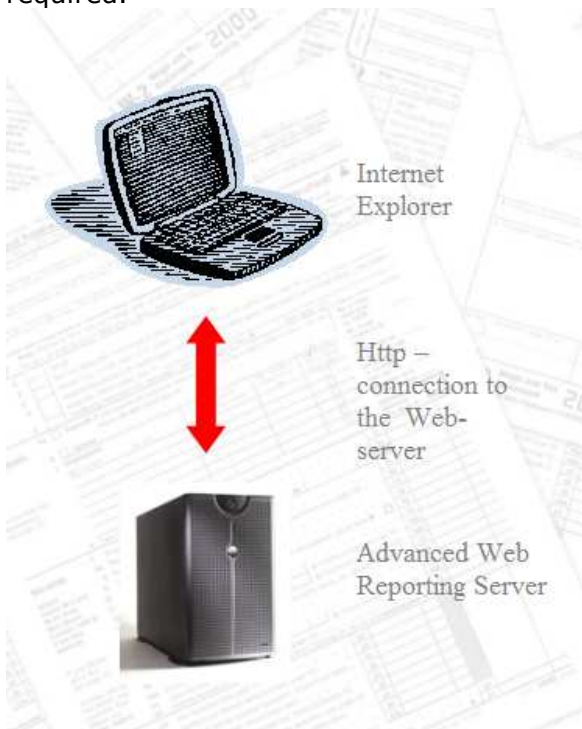
The users are centrally managed by the domain of the company's data network. Also the user groups are available.

Using Extranet, VPN or modem solutions, reports and displays can be shared with cooperation partners also.

Data from the reports and displays can be copied to other Windows applications via the clipboard.

Modular structure

To view reports and displays, only the Internet Explorer and connection to the IIS server are required.



The reporting system is maintained through the IIS server, which means that the need for application setups on the user workstations is reduced.

The reporting system is easy to expand thanks to its modular structure.

New data sources can be included afterwards by introducing a new Active Data Layer component. Existing old data sources can be reused.

Creating the report

Reports and displays are created using the Report Builder.

First the report or display must be named. After that the header rows, logos and basic settings like background and report colours are defined. The report can also be provided with fetch criteria parameters such as start and end date, and batch id.

After defining headers and parameters for the report, the actual report body is defined. The necessary data elements such as data cells, tables and graphic components are defined. The data items are connected with the corresponding data elements. Finally the fetch conditions are formulated by utilising the starting parameters defined for the report.

The Report Builder generates the asp file in the background while the report's editing process proceeds. The progress of the report can be viewed in Preview mode after each editing step; the report is then in the same format as in the final phase when opened by using IE.

The reports are stored directly to the final report directory and are available for all users immediately after the report has been stored.

AWR application structure

The server application of the reporting system consists of an MS IIS server, ASP reports and OLEDB interface modules.

